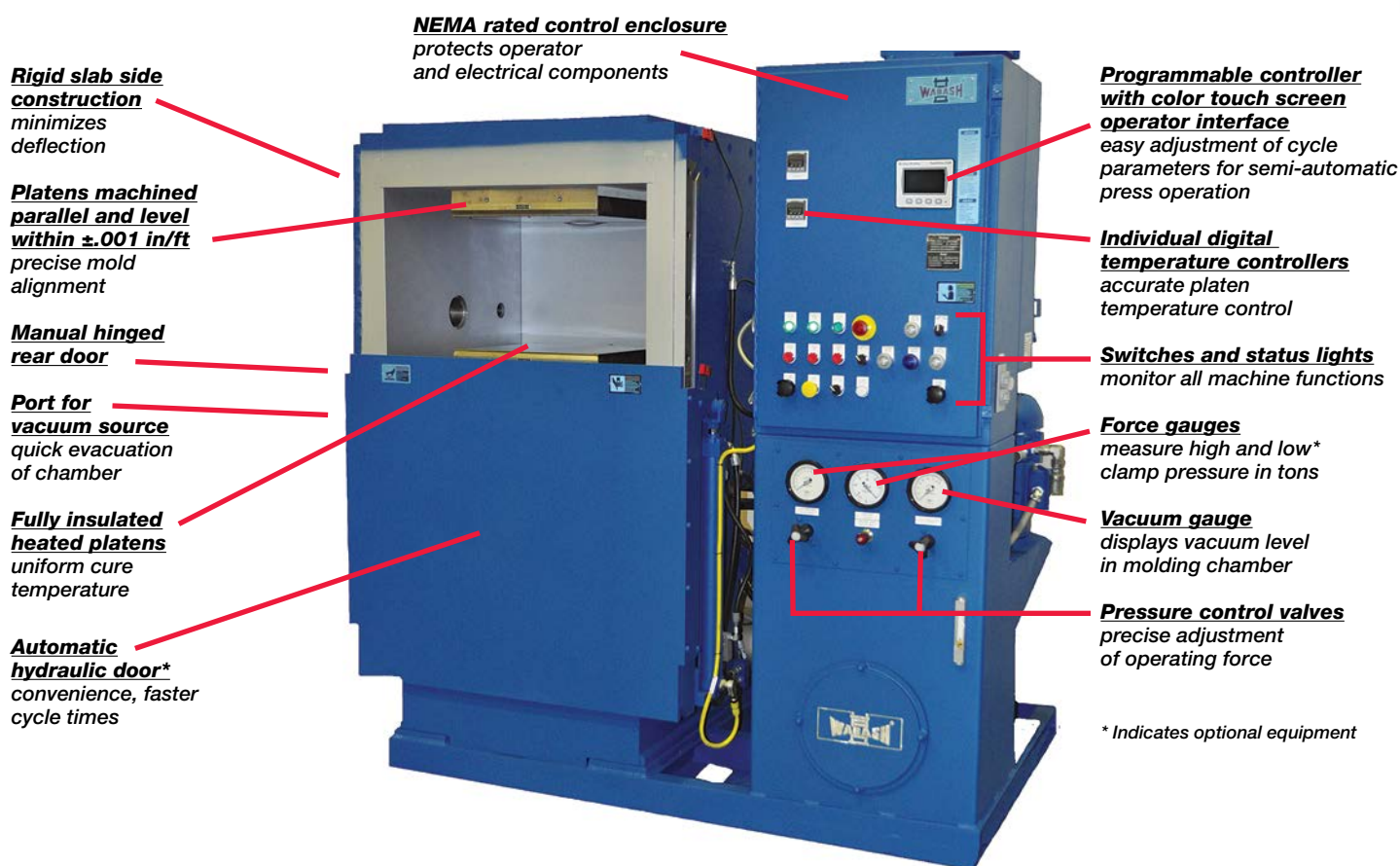




Vantage Series Vacuum Presses

Vacuum chamber molding and laminating presses increase quality and production



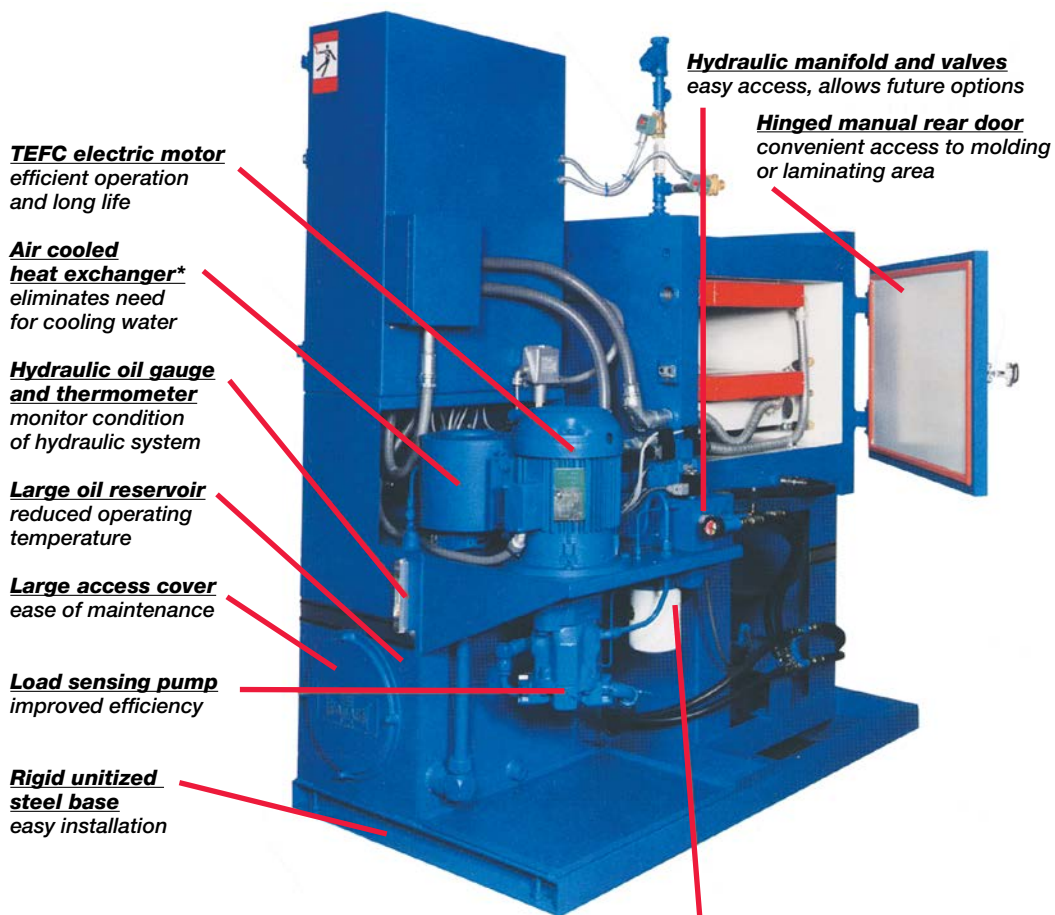
Compression molding or laminating on a press equipped with a vacuum chamber pays off in faster production, higher quality and reduced scrap parts. Surrounding the workpiece with a vacuum removes heated gases, trapped air and harmful vapors from the part, thereby eliminating defects. The Wabash line of vacuum presses parallels our standard Vantage

presses from 50 to 150 tons of clamp force. The Vantage II presses range from 200 through 600 tons of clamp force. They incorporate the quality construction and performance features of the standard Wabash presses plus a versatile and efficient vacuum chamber design that lets you take full advantage of the benefits of vacuum operation.

30 to 600 ton capacities ■ Options provide versatility
Larger and custom engineered presses available



Quality Vantage and Vantage II Presses with the added productivity of vacuum during operation



TEFC electric motor
efficient operation
and long life

**Air cooled
heat exchanger***
eliminates need
for cooling water

**Hydraulic oil gauge
and thermometer**
monitor condition
of hydraulic system

Large oil reservoir
reduced operating
temperature

Large access cover
ease of maintenance

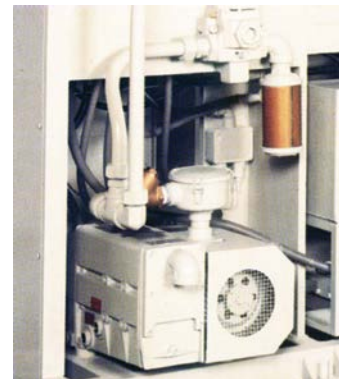
Load sensing pump
improved efficiency

**Rigid unitized
steel base**
easy installation

Hydraulic manifold and valves
easy access, allows future options

Hinged manual rear door
convenient access to molding
or laminating area

10 micron cartridge filter
protects hydraulic system
from contaminants



A port for vacuum source connection is standard. You have the option of an integral, built-in vacuum system consisting of an air cooled, rotary vane vacuum pump sized to your specific requirement.



Alternatively, you can choose the free-standing rapid draw-down vacuum system which can be used to operate more than one machine at a time. A vacuum is held in the tank between cycles, ready to quickly evacuate the chamber of the next machine when it reaches the proper point in its cycle.

Options Customize Standard Press to Your Needs

You benefit from the many options that let you tailor a Wabash press to fit your application. When molding certain composites, higher platen temperatures are required. You can choose platens capable of temperatures to 1200°F.

Equip your Wabash vacuum press with multiple daylight openings, worktables, cooled platens and material handling systems, depending on your productivity objectives.

Select the Control Option That Best Fits Your Task

Standard control package includes a programmable controller and color touch screen operator interface. Options include a controller for pro-

grammable temperature and pressure cycles.

This flexibility affords the opportunity to capitalize on optimum cost-effectiveness with the most machine for a minimal investment.

Wabash vacuum presses feature a heavy-duty slab side construction which forms the four walls of the vacuum chamber. Manually operated hinged doors on front and rear seal to create a vacuum environment during operation.

Hydraulically operated automatic front and rear doors can be specified as an option for speed and convenience.

Precision ground platens are parallel and level to ±.001 in/ft. Heavy slab construction minimizes deflection.

Self-contained hydraulic system includes an efficient

load sensing, variable volume, pressure compensated pump, hydraulic oil reservoir with sight gauge, thermometer and a clean-out door.

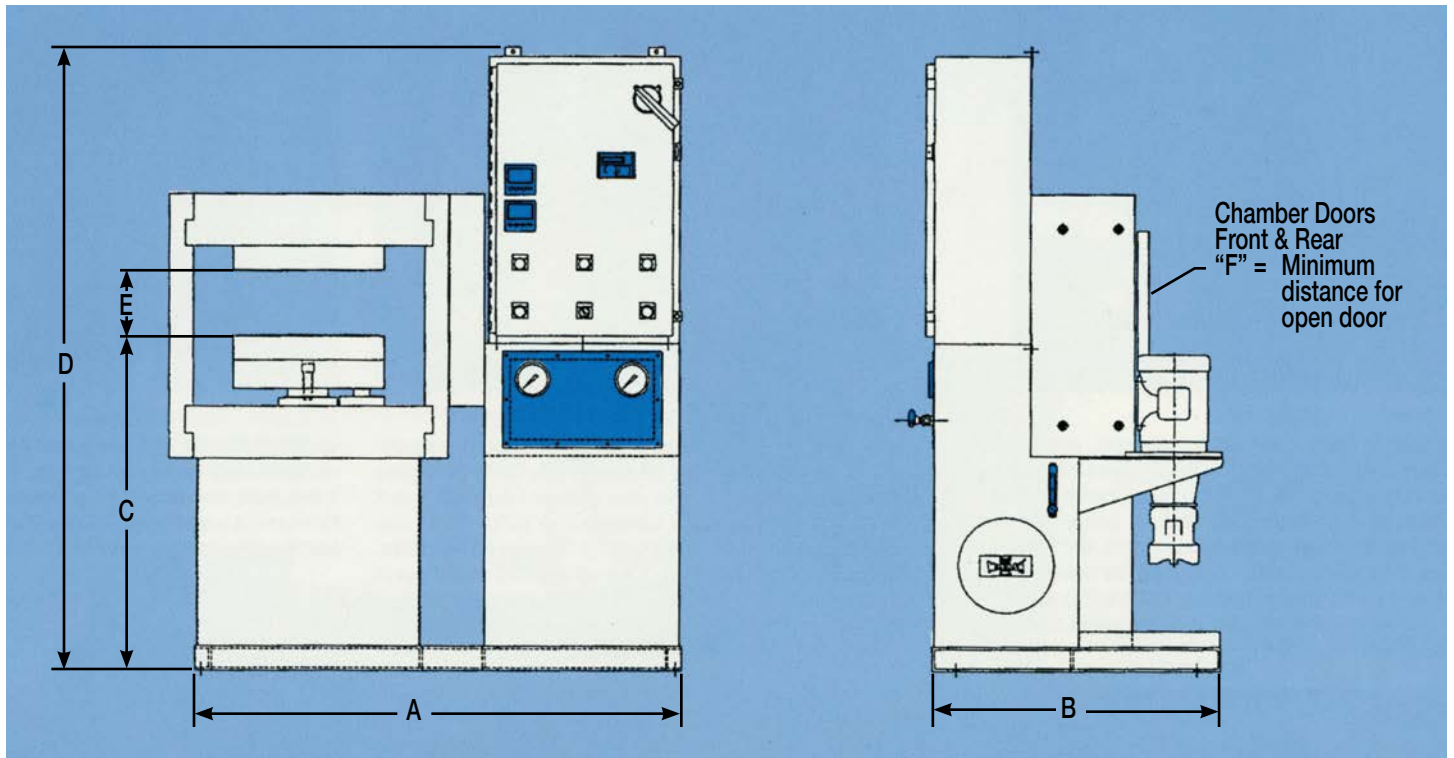
Standard Features

- Standard platen sizes from 15" x 15" to 36" x 36"
- Electrical characteristics: 460/3/60
- Daylight openings to 24"
- Integral hydraulic system featuring load sensing pump
- Drip pan under hydraulic unit
- Water cooled heat exchanger
- PLC control system with color touch screen operator interface and "anti-tie-down" circuit
- Electrically heated platens to 650°F.



Custom presses and larger machines are available. Press shown is a 400 ton down acting Vantage press with 36" x 32" heated platens. It is equipped with automatic hydraulically operated chamber doors and a lower platen shuttle for quick loading and unloading. A remote vacuum system evacuates the chamber during operation.

Standard Specifications for Vacuum Molding Presses



Model	Clamp Force (tons)	Cyl. Bore (in)	Clamp Stroke (in)	Platen Size (in)	Platen Heat (kW)	Speeds (ipm)			Motor Horsepower	w/Heat Amps @ 460	Dimensions (in)						Weight (lbs)	
						Close	Press	Open			A	B	C	D	E	F		
GS30-15	30	5	12	15x15	13.6	70	5	75	3	19	50	37	40	70	12	36	4,400	
VS50-15	50	7	12	15x15	13.6	75	5	80	5	22	61	45	42	78	12	34	7,000	
VS50-18	50	7	12	18x18	20.8	75	5	80	5	29	64	45	42	78	12	37	7,600	
VS50-24	50	7	12	24x24	30.4	75	5	80	5	39	70	45	42	78	12	43	8,500	
VS75-18	75	8	12	18x18	20.8	100	5	80	7.5	33	64	45	42	78	12	38	8,000	
VS75-24	75	8	12	24x24	30.4	100	5	80	7.5	42	70	45	42	78	12	44	8,900	
VS100-18	100	10	12	18x18	20.8	60	5	55	7.5	33	68	45	42	78	12	40	8,200	
VS100-24	100	10	12	24x24	30.4	60	5	55	7.5	42	74	45	42	78	12	46	9,100	
VS100-30	100	10	12	30x30	45.2	60	5	55	7.5	57	80	50	42	78	12	52	10,100	
VS150-24	150	12	12	24x24	30.4	75	5	60	10	55	74	45	42	78	12	46	9,300	
VS150-30	150	12	12	30x30	45.2	75	5	60	10	80	80	50	42	78	12	54	10,400	
S200-24	200	14	16	24x24	30.4	Consult Factory				20	58	82	46	58	80	16	47	20,000
S200-30	200	14	16	30x30	45.2					20	73	88	50	58	80	16	53	21,100
S250-24	250	16	16	24x24	30.4					20	58	84	46	61	80	16	49	20,600
S250-30	250	16	16	30x30	45.2					20	73	80	50	61	80	16	55	21,700
S300-30	300	16	16	30x30	45.2					20	73	82	50	62	80	16	57	22,300
S300-36	300	16	16	36x36	61.4					20	89	98	54	62	80	16	63	23,000
S350-30	350	18	16	30x30	45.2					20	73	88	50	64	80	16	59	23,900
S350-36	350	18	16	36x36	61.4					20	89	100	54	64	80	16	65	28,900
S400-30	400	20	16	30x30	45.2					20	73	96	50	65	80	16	60	23,500
S400-36	400	20	16	36x36	61.4					20	89	102	54	65	80	16	66	24,600

Control system options to improve your process...



PanelView C400
Standard operator interface used for easy set up of press cycle.



Platen Temperature Controllers
Standard 1/16th DIN digital temperature controllers.



MiniViewpoint with PanelView C600 Operator Interface
Mid-level control system for proportional control pressure and for integral temperature control.

Wabash Vacuum Press with Integral Shroud

Integral Vacuum Shroud enhances molding quality and ensures cavity filling by eliminating trapped air.

Rapid clamping and pressing speed ensures a productive cycle time, an optional tilting upper platen allows easy access for the operator to clean the mold between cycles.

Standard Features:

- Power vacuum shroud
- Energy-efficient hydraulic system
- Safety guards around molding area

Optional Features:

- Custom de-molding station
- Tilting upper platen
- Part ejector system
- Customized control system
- Light curtain on front of press



Rely on Wabash presses for every need

Over the years, Wabash MPI has accepted, and accomplished, the challenge of designing standard and custom presses for industry worldwide. Wabash MPI manufactures presses to meet nearly every production requirement. Parts and service are readily available on all Wabash presses. All are manufactured in the U.S.A. Our customers are accustomed to the reliable performance and low maintenance requirements of their Wabash presses. That's one of the many reasons they return to Wabash when their business warrants additional machines. We've been building them that way for over 70 years. For more information on any of our presses, see your Wabash MPI representative or visit our website, call or e-mail us.



WABASH MPI

1569 Morris St., P.O. Box 298
Wabash, IN 46992-0298 U.S.A.
Phone: 260-563-1184 • Fax: 260-563-1396
E-mail: wabashmpi@acscorporate.com
www.wabashmpi.com



All new Wabash presses are manufactured in compliance with current regulations and are furnished with safety guards as standard equipment. Guards may have been removed in some photographs for clarity. Wabash strongly recommends use of guards and personal protection equipment when operating any press. As a result of continuous improvement, specifications are subject to change without notice. Consult factory for specific data and pricing.